

# PROFESSIONAL OFFICE SPACE FOR LEASE

## 2000 Spall Road, Kelowna, BC

On the vibrant corner of Spall and Springfield



### EXCELLENT VALUE FEATURING:

- *Location, Location, Location: great high traffic location with good access.*
- *Elevator Access | Large Continuous Windows | Great Parking | Pylon Signage*
- *Building features modern security, electrical and HVAC systems.*
- *Nice improvements in place*
- *C10 Zoning allows for many office uses (see attached zoning summary)*

### COSTING:

Suite	Approx. Size (s.f.)	Base Rent (per s.f. / year)	Est. Triple Net (per s.f. / year)	Total Rent (per month)	Additional
200	2200	\$12.00	\$6.25	\$3345	GST
270	2600	\$12.00	\$6.25	\$3953	GST

### FOR MORE INFORMATION PLEASE CONTACT:

**Corporate Accord Realty** LTD.

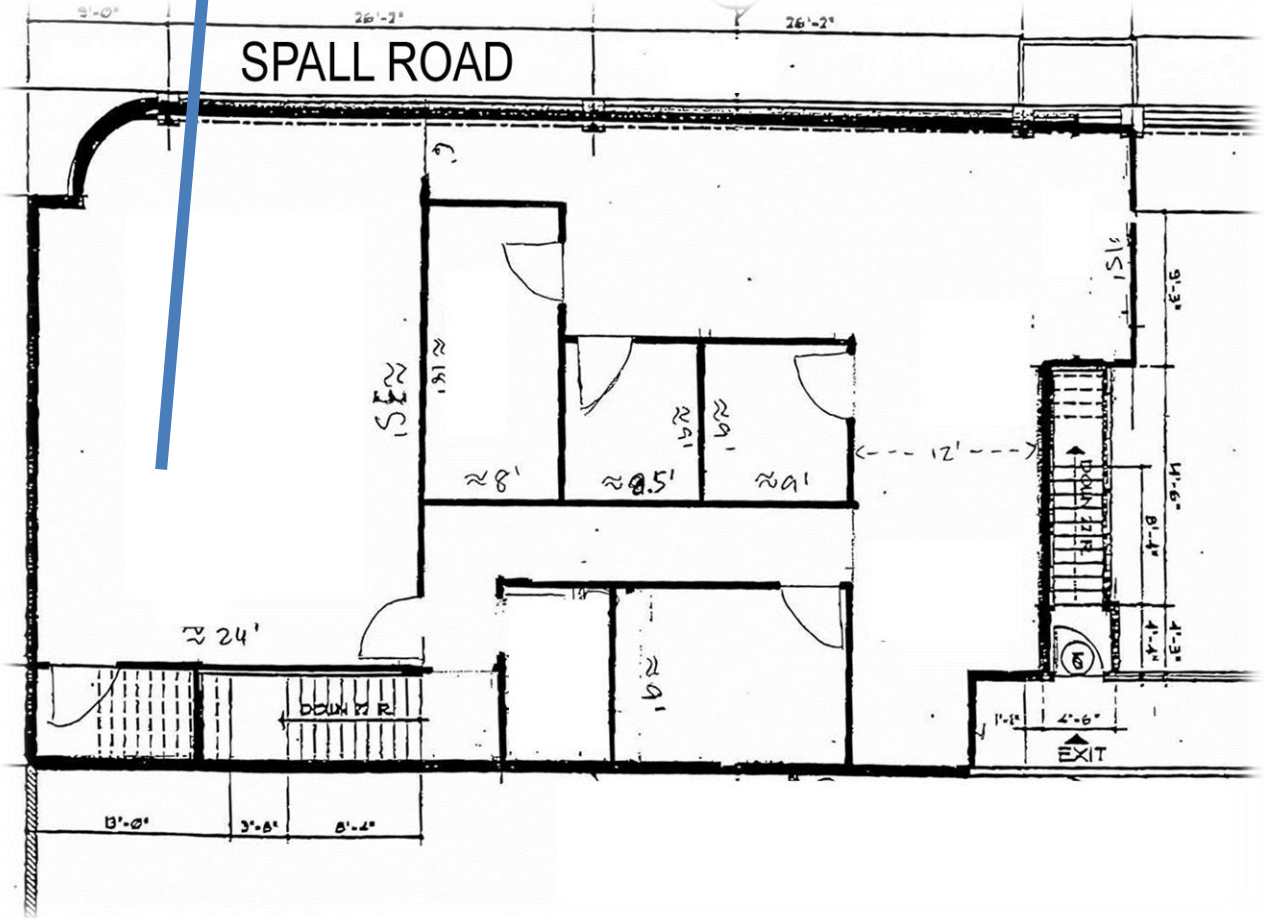
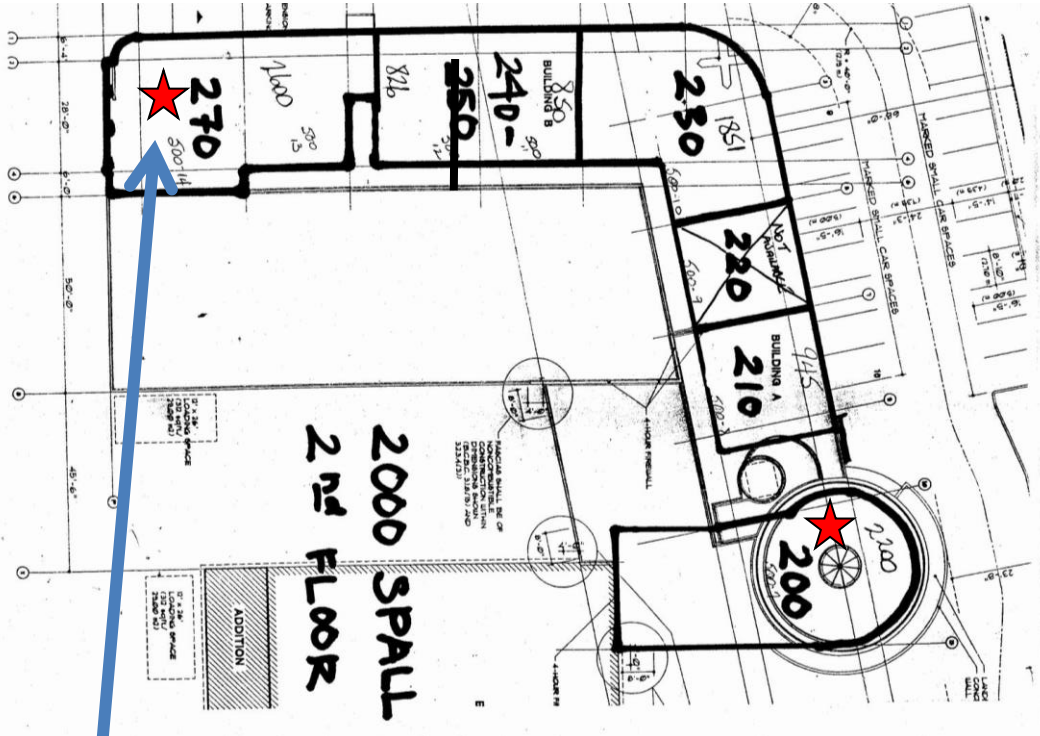
Commercial & Investment Real Estate Services

**Peter Bouchard**, B.Comm.  
Managing Broker, Commercial Realtor

E: [Peter@CorpAccord.com](mailto:Peter@CorpAccord.com) T: 250.470.9551 F: 250.764.4001 W: [www.CorpAccord.com](http://www.CorpAccord.com)

The information contained herein was obtained from sources assumed to be reliable and while thought to be correct, is not guaranteed by Corporate Accord Realty Ltd. and is subject to terms and conditions existing at the time of any transaction taking place. Plans, sizes, rates and inducements are subject to change without notice. Please verify all important information. This communication is not intended to cause or induce breach of an existing agency relationship. This project is MLS marketed.

**SECOND FLOOR ELEVATOR ACCESSIBLE OPTIONS:**



**CORNER LOCATION:**



**Kelowna's C10 Zoning allows for a multitude of office uses including the following:**

**BROADCASTING STUDIOS** means development used for the production and/or broadcasting of audio and visual programming typically associated with radio, television and motion picture studios.

**BUSINESS SUPPORT SERVICES** means development used to provide support services to businesses and which are characterized by one or more of the use of minor mechanical equipment for printing, duplicating, binding or photographic processing; secretarial services; the provision of office maintenance or custodial services; the provision of office security; and the sale, rental, repair, or servicing of office equipment, furniture and machines. Typical uses include but are not limited to printing establishments, testing laboratories, film processing establishments, janitorial firms and office equipment sales, repair establishments, and sign shops.

**COMMERCIAL SCHOOL** means development used for training, instruction, and certification in a specific trade, skill, or service for the financial gain of the individual or company owning the school. Typical uses include but are not limited to secretarial, business, hairdressing, beauty culture, dancing, or music schools.

**COMMUNITY RECREATION SERVICES** means development for recreation, social or multi-purpose use primarily intended for local community purposes. Typical uses include but are not limited to community halls, non-profit social clubs, and community centres operated by a local residents association.

**GOVERNMENT AGENCY** means development used by municipal, provincial, or federal government providing for a consolidated operation that provides a combination of direct services to the public, offices for administration, limited outdoor storage of fleet vehicles and equipment, and indoor storage and maintenance areas for fleet vehicles, equipment and warehousing.

**HOUSEHOLD REPAIR SERVICES** means development used for the provision of repair to goods, equipment and small appliances normally found within the home. Typical uses include but are not limited to radio, television, and appliance repair, furniture refinishing, and upholstery shops. This use class does not include personal services establishments.

**OFFICES, CONSTRUCTION AND DEVELOPMENT INDUSTRY** means those professional offices restricted to providing service to the construction and development industries. This includes offices providing architectural, engineering, surveying, landscape architectural, and planning services.

**PARTICIPANT RECREATION SERVICES, INDOOR** means facilities within an enclosed building for sports, active recreation and performing and cultural arts where patrons are predominantly participants. Typical uses include but are not limited to athletic clubs, health and fitness clubs, swimming pools, rifle and pistol ranges, bowling alleys, and racquet clubs.

**PRIVATE CLUB** means a development used for the meeting, social, or recreational activities of members of a philanthropic, social service, non-profit, athletic, business or fraternal organisation. Private clubs may include rooms for eating, drinking and general assembly and may hold a Liquor Primary License.

**If you are unsure if your business is a fit for this zoning then please contact Peter Bouchard at 250.470.9551 or Peter@corpacord.com.**