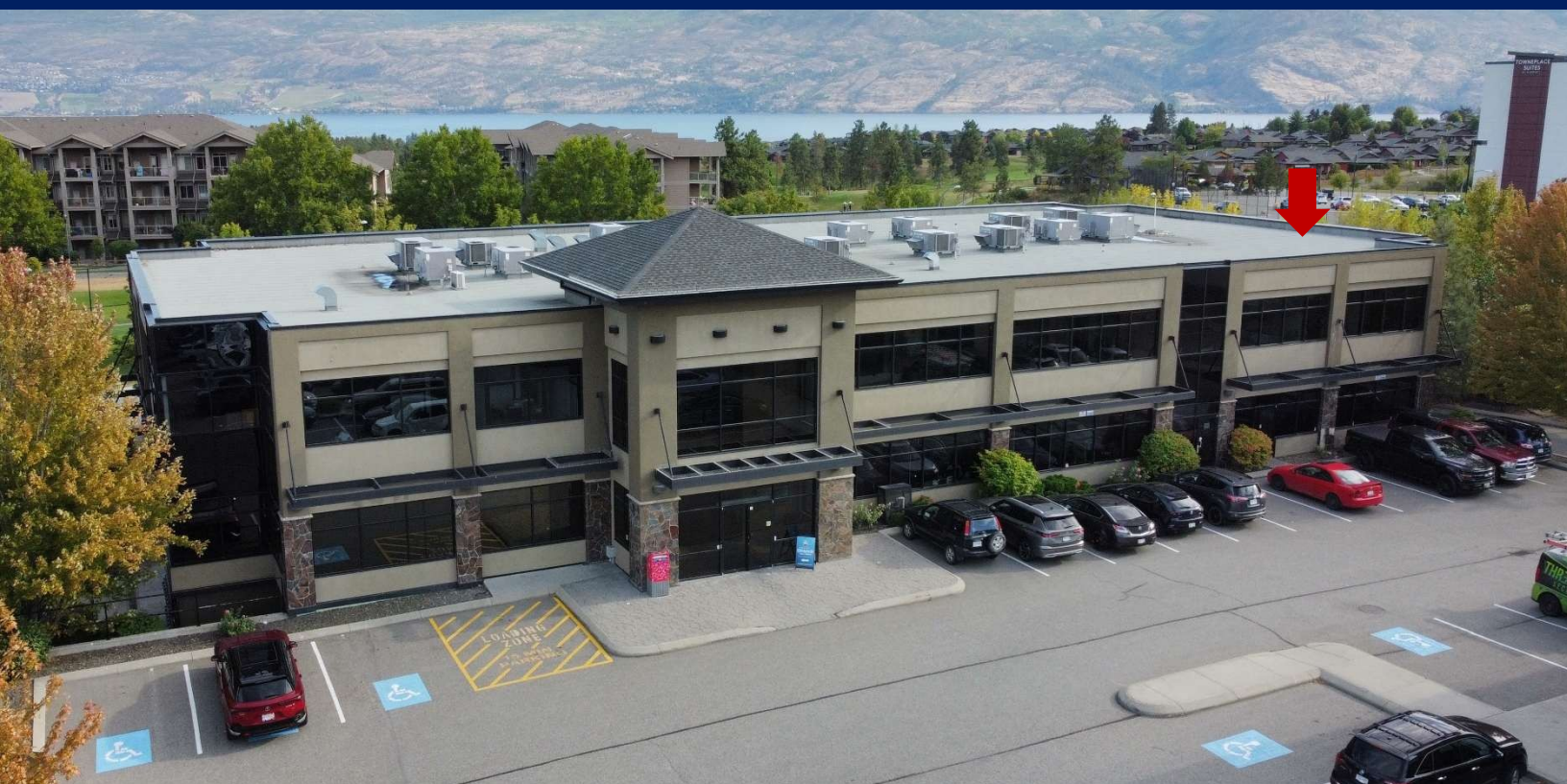


## Vintage View Center 3500 Carrington Road, Westbank

- 1970 ft.<sup>2</sup> of corner second-floor professional office space with extensive large windows
- This bright unit is currently set up with a beautiful reception area, 5 separate offices, a board room, a file storage room, and an open workspace area
- Join Nature's Fare, Marriott Inn & Suites, Kelly O'Bryan's, Western Financial Group, Sovereign Cycle, Tim Horton's...
- This Centre features abundant parking, high-end architecture and extensive glazing
- Professional signage options on lobby board and exterior monument sign
- Zoned RC allowing for a variety of office uses
- Elevator access | 2 reserved underground parking stalls | underground storage

Unit	Deemed Size (Rentable sf)	Base Rent* (/sf/yr)	Triple Net & Utilities (/sf/yr)	"All In" Monthly Rent	Additional costs
207	1,970	\$24.00	\$11.46	\$5,821	GST & Utilities

\* Base Rent to increase 3% annually to cover inflation



Corporate  
Accord Realty

**Cameron Bouchard, B.Comm.**  
Owner | Deal Analyst | Commercial Realtor  
250.300.3658 | Cam@CorpAccord.com

**Peter Bouchard, B.Comm.**  
Owner | Managing Broker | Commercial Realtor  
250.470.9551 | Peter@CorpAccord.com

www.CorpAccord.com | 500 Sarsons Road, Kelowna, BC V1W 1C2



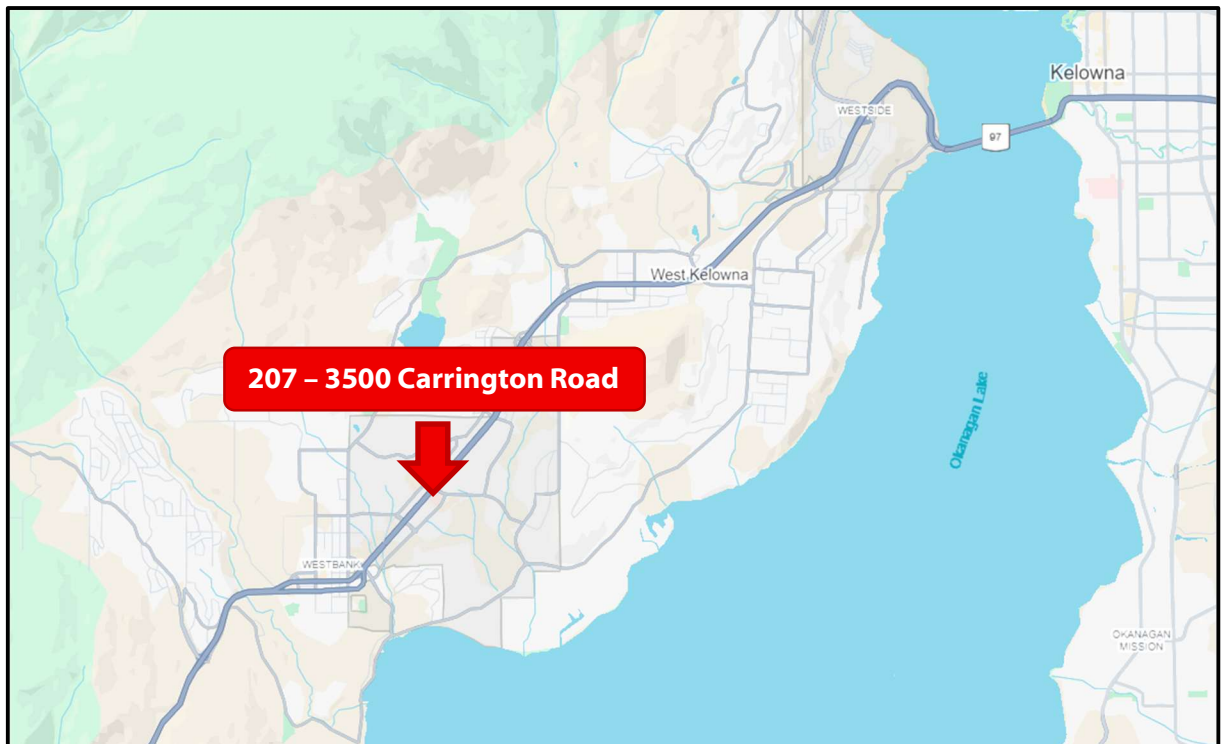
## Aerial of Lot

---



## Location:

---



## Interior Photos





## Interior Photos: Continued

---





## Interior Photos: Continued

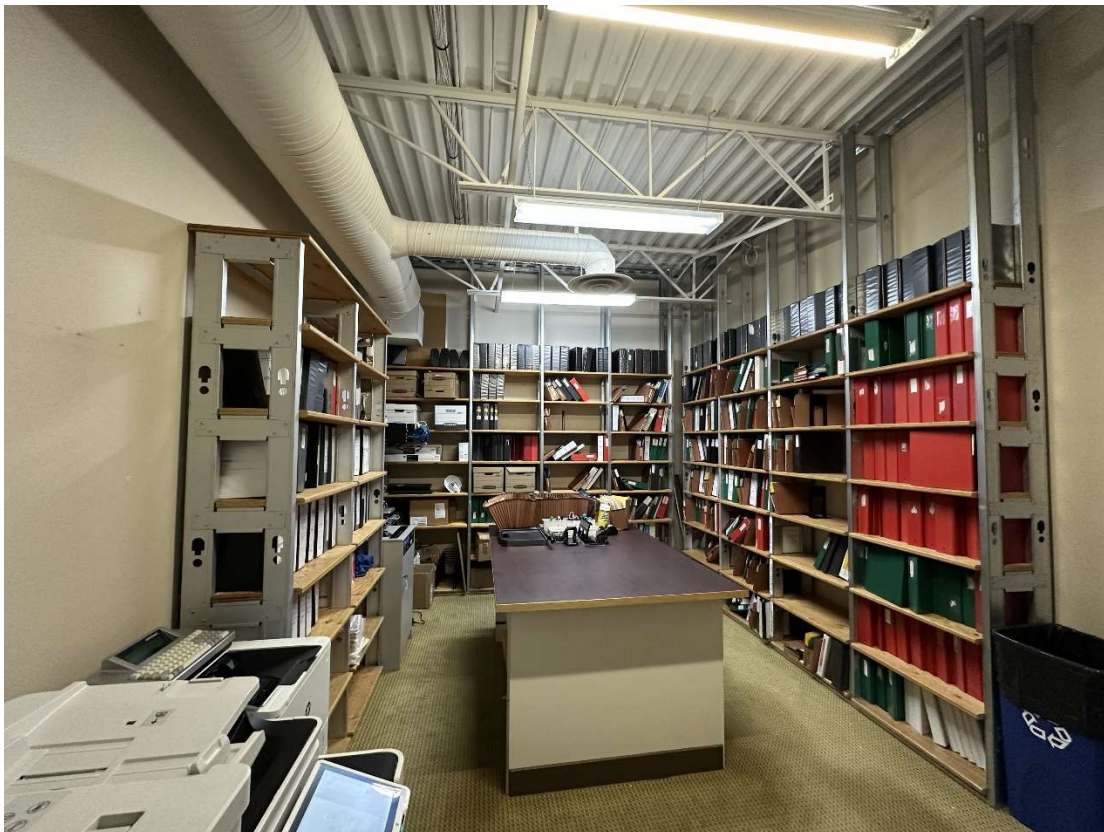
---





## Interior Photos: Continued

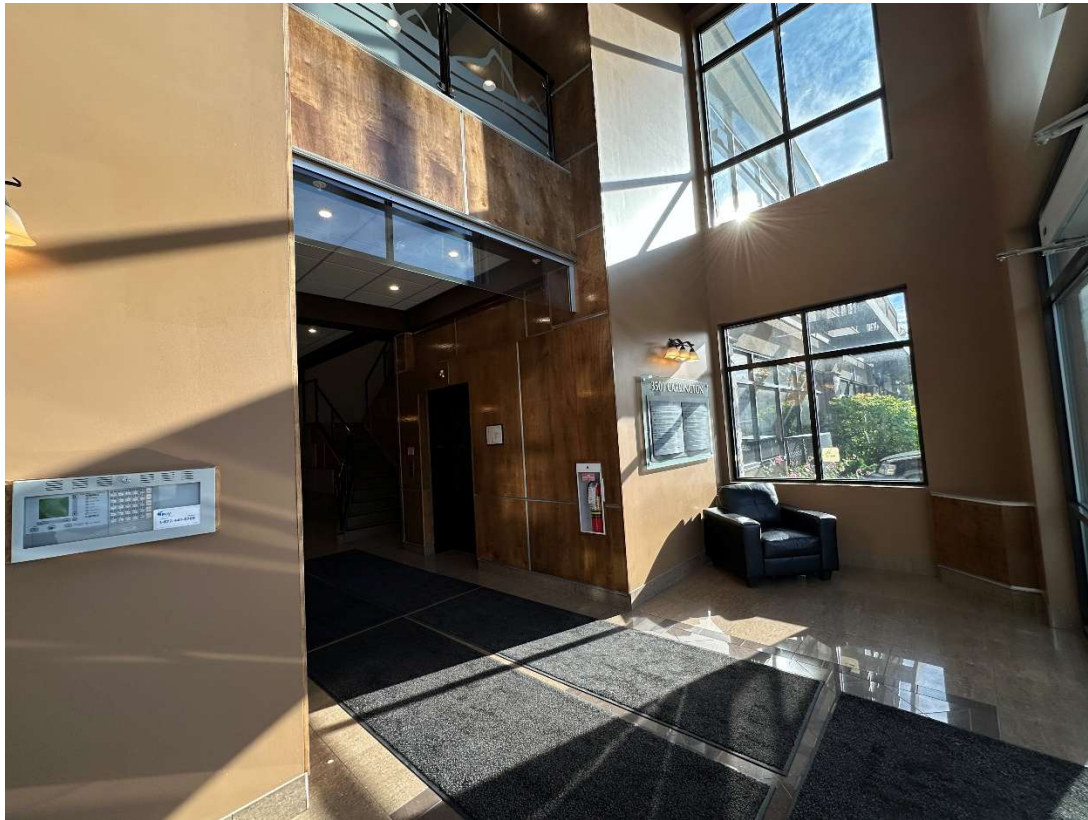
---





# Lobby and Parking Areas

---



# Exterior Monument Sign

---



## RC Zoning Per WFN Land Use Law No 2007-01 (Subject to Change)

---

### RC – RETAIL COMMERCIAL

#### Permitted Uses

The following uses and no others shall be permitted in the RC Designation:

- .1 Apartment housing – above street level;
- .2 Entertainment or recreation establishment, indoor;
- .3 General commercial establishment, not to exceed a maximum GFA of 4,650 square metres per tenancy;
- .4 Hotel or motel;
- .5 Office;
- .6 Personal service establishment;
- .7 Place of assembly; and
- .8 Accessory use, building or structure.