

RETAIL SPACE FOR LEASE:

106 – 1835 Dilworth Drive, Kelowna

On Dilworth between Atmosphere and Scotiabank



EXCELLENT VALUE FEATURING:

- High traffic corner location with Highway 97N and Dilworth drive frontages!
- Join Scotiabank, Atmosphere, Bank of Montreal, BC Liquor Store and more!
- 2900sq.ft. of semi open layout retail space on main floor plus bonus 600sf mezzanine
- Great Highway 97 access/ egress and abundant free on-site parking
- Recent facade upgrades with nice signage opportunities
- Zoned C6 Regional Commercial (retail and office allowed: zoning detailed in page 4)
- Ask Landlord about renovation incentives!

COSTING:

Suite	Approx. Size (s.f.)	Base Rent (per s.f. / year)	Est. Triple Net (per s.f. / year)	Total Rent (per month)	Additional
106	2900	\$22.00	\$6.00	\$6766	GST & Util.

FOR MORE INFORMATION PLEASE CONTACT:



Commercial & Investment Real Estate Services

Peter Bouchard, B.Comm.
Managing Broker, Commercial Realtor

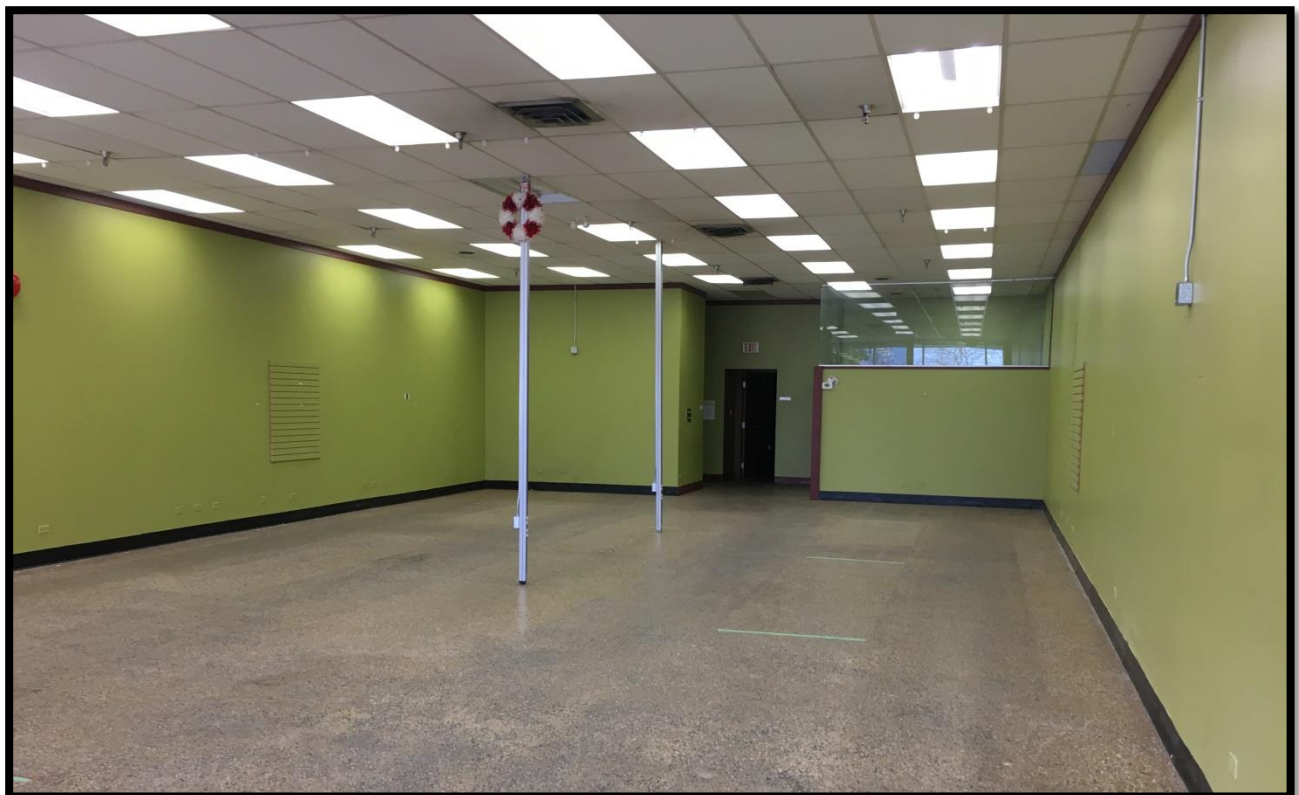
E: Peter@CorpAccord.com

T: 250.470.9551

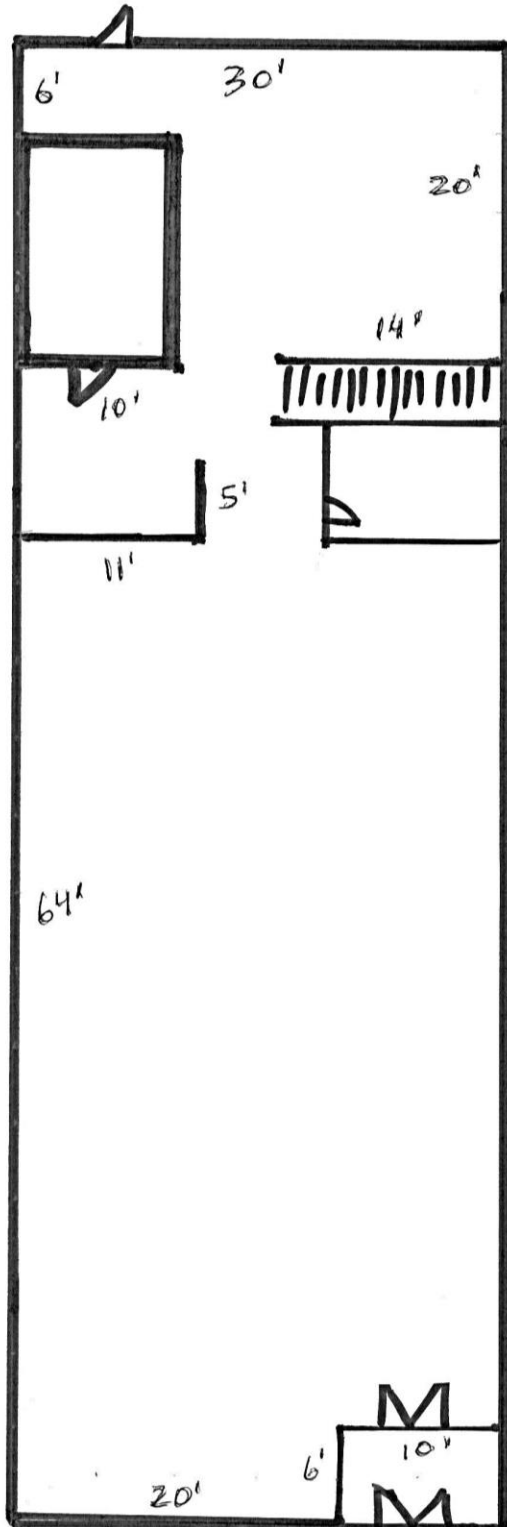
F: 250.764.4001

W: www.CorpAccord.com

The information contained herein was obtained from sources assumed to be reliable and while thought to be correct, is not guaranteed by Corporate Accord Realty Ltd. and is subject to terms and conditions existing at the time of any transaction taking place. Plans, sizes, rates and inducements are subject to change without notice. Please verify all important information. This communication is not intended to cause or induce breach of an existing agency relationship. This project is MLS marketed.



APPROXIMATE FLOORPLAN:



PARKING AREA

CENTRAL KELOWNA LOCATION:



14.6 C6 – Regional Commercial/ C6rls – Regional Commercial (Retail Liquor Sales) C6lp – Regional Commercial (Liquor Primary)

14.6.1 Purpose

The purpose is to designate and preserve land for the **development** of larger **shopping centres** with a diversity of **uses**.

14.6.2 Principal Uses

The principal uses in this zone are:

- (a) amusement arcades, major
- (b) business support services
- (c) breweries and distilleries, minor
- (d) community garden
- (e) emergency and protective services
- (f) financial services
- (g) food primary establishment
- (h) gas bars
- (i) government services
- (j) health services
- (k) hotels
- (l) liquor primary establishment, major (C6lp only)
- (m) liquor primary establishment, minor
- (n) motels
- (o) non-accessory parking
- (p) offices
- (q) participant recreation services, indoor
- (r) personal service establishments
- (s) public libraries and cultural exhibits
- (t) recycled materials drop-off centres
- (u) religious assemblies
- (v) retail liquor sales establishment (C6rls only)
- (w) retail stores, convenience
- (x) retail stores, general
- (y) spectator entertainment establishments
- (z) temporary parking lot