

# OFFICE/RETAIL FOR LEASE:

## 100 – 1465 Ellis, Kelowna, BC

On just North of Bernard Avenue and directly across from the Queensway bus loop

- Location, location, location! In the epicenter of downtown Kelowna!
- 3696 ft.<sup>2</sup> of AAA office or retail premises with high ceilings
- modern open layout interior with high-end washrooms and kitchen in place
- Three on-site parking stalls and façade signage is included
- C7 ZONING (visit [www.city.Kelowna.bc.ca](http://www.city.Kelowna.bc.ca)) allows for most office and retail uses

**FLEXIBLE  
SIZES FROM  
1500-3696SF**



Unit	Main Floor (ft. <sup>2</sup> )	Base Rent (/sf/yr)	Triple Net (/sf/yr)	"All In" Rent Per Month	Additional costs
100 & 102	3696	\$17.50	\$9.22	<b>\$8229</b>	GST
102	2000	\$18.50	\$9.22	<b>\$4620</b>	GST

*Includes Water, Gas and Electricity*

**Corporate Accord Realty** LTD.

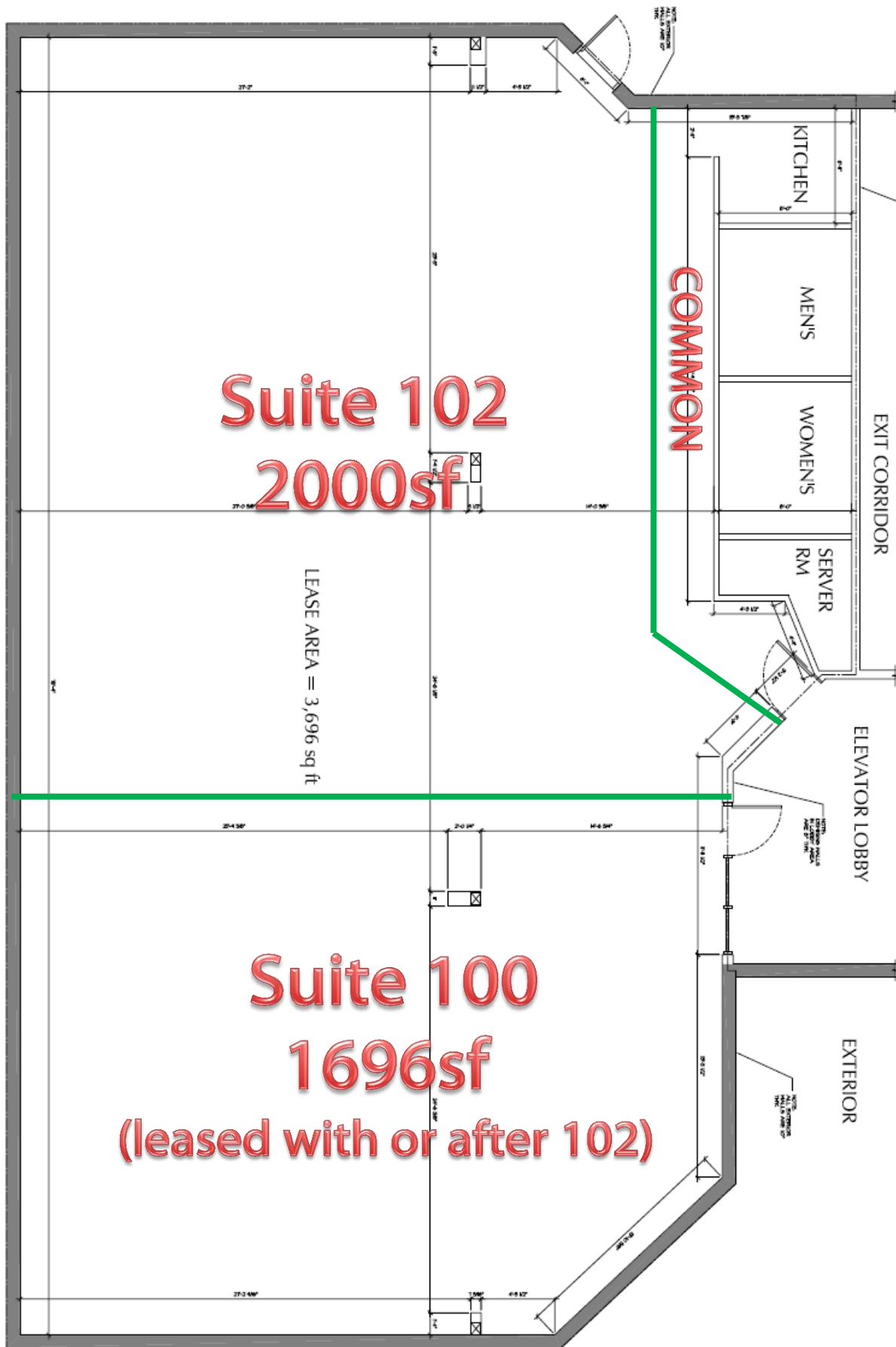
Commercial & Investment Real Estate Services

**Peter Bouchard**, B.Comm.  
Managing Broker, Commercial Realtor

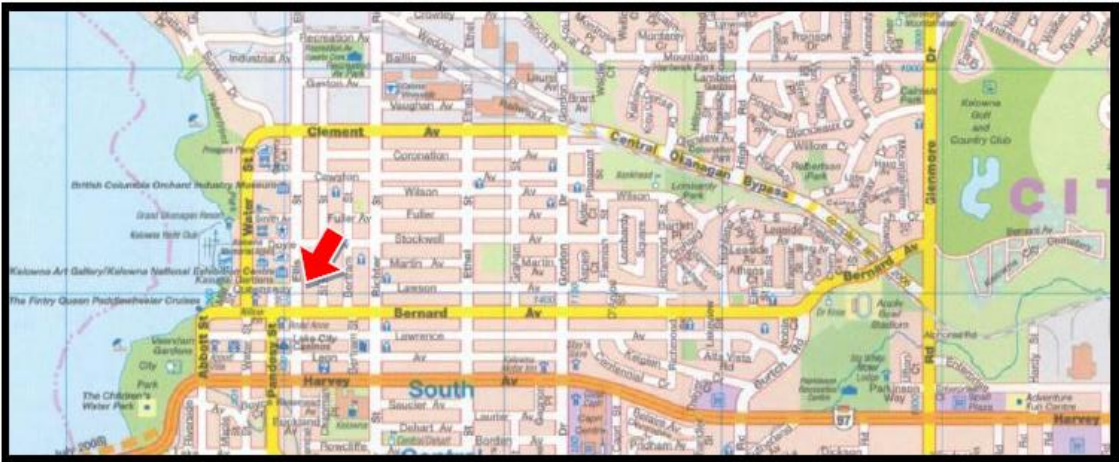
E: [Peter@CorpAccord.com](mailto:Peter@CorpAccord.com) T: 250.470.9551 F: 250.764.4001 W: [www.CorpAccord.com](http://www.CorpAccord.com)

The information contained herein was obtained from sources assumed to be reliable and while thought to be correct, is not guaranteed by Corporate Accord Realty Ltd. and is subject to terms and conditions existing at the time of any transaction taking place. Plans, sizes, rates and inducements are subject to change without notice. Please verify all important information. This communication is not intended to cause or induce breach of an existing agency relationship. This project is MLS marketed.

POTENTIAL DEMISING PLAN - OTHER SIZES AVILABLE:



**GREAT DOWNTOWN KELOWNA LOCATION!**



**INTERIOR:**



