

2045 Enterprise Way, Kelowna

- *Flexible unit sizes – *Adaptable to meet Tenant requirements – Bring your ideas to us!*
 - *Exclusive full top floor leasing opportunity 300&301*: 10,656 rentable sf (BOMA)*
 - *or... Proposed unit 300*: 7,010 sf (BOMA) | Proposed unit 301*: 3,646 sf (BOMA)*
- *Enterprise Center is a 30,233 sf three-story office building with elevator*
- *Exceptionally good onsite (24 stalls allocated to the 3rd floor!) and offsite parking*
- *Extensive leasehold improvements and carpet tile in place*
- *Convenient central Kelowna location one block off Highway 97N*
- *Zoned CA1 for a variety of office uses | Prominent pylon signage is available*
- *Bike friendly building with showers and lockers*
- *Great neighborhood close to a multitude of restaurants, shopping and other amenities!*

Unit	Deemed Size (Rentable sf)	Base Rent* (/sf/yr)	Triple Net & Utilities (/sf/yr)	"All In" Rent Per Month**	Parking Spaces
300 & 301	10,656	\$18.50	\$9.60	\$24,953	24
300	7,010	\$19.00	\$9.60	\$16,707	16
301	3,646	\$20.00	\$9.60	\$8,993	8

* Base Rent to increase 3% annually to cover inflation | **Plus GST, Janitorial, Security & Parking



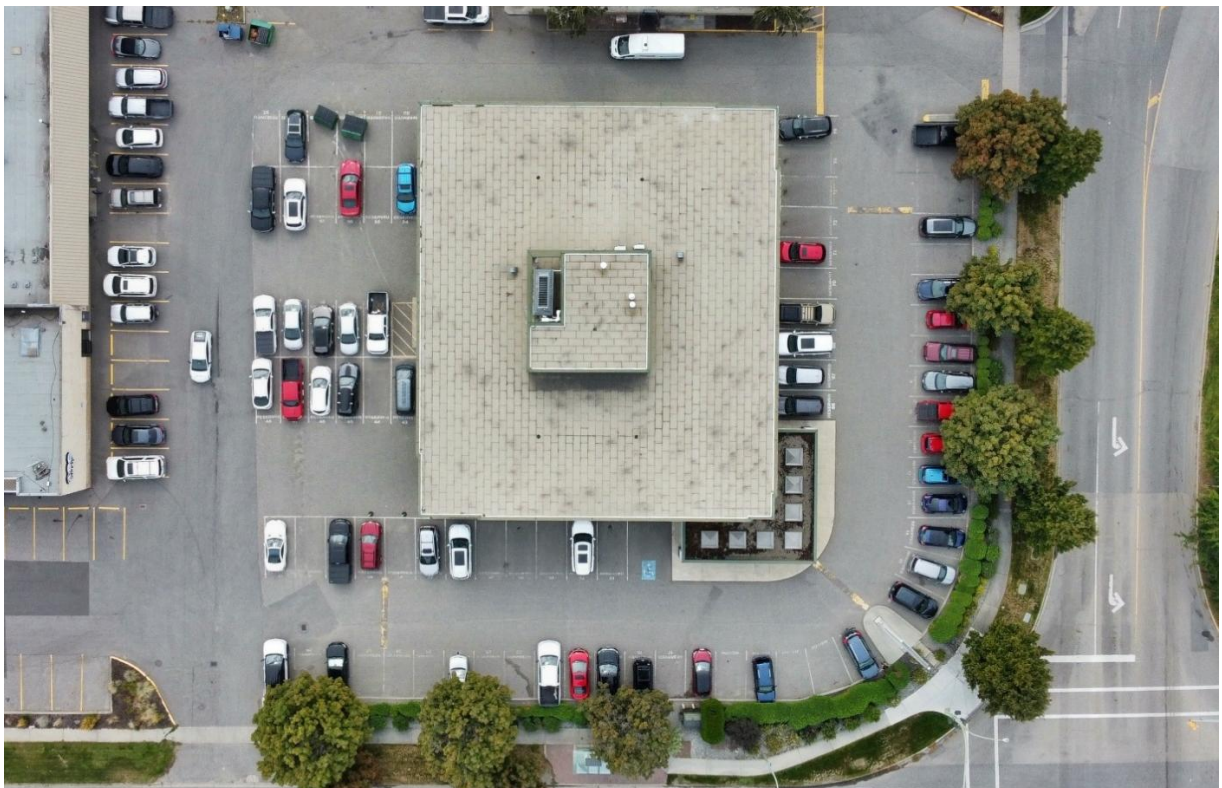
Cameron Bouchard, B.Comm.
 Owner | Commercial Realtor
 250.300.3658 | Cam@CorpAccord.com

Peter Bouchard, B.Comm.
 Owner | Commercial Realtor
 250.470.9551 | Peter@CorpAccord.com

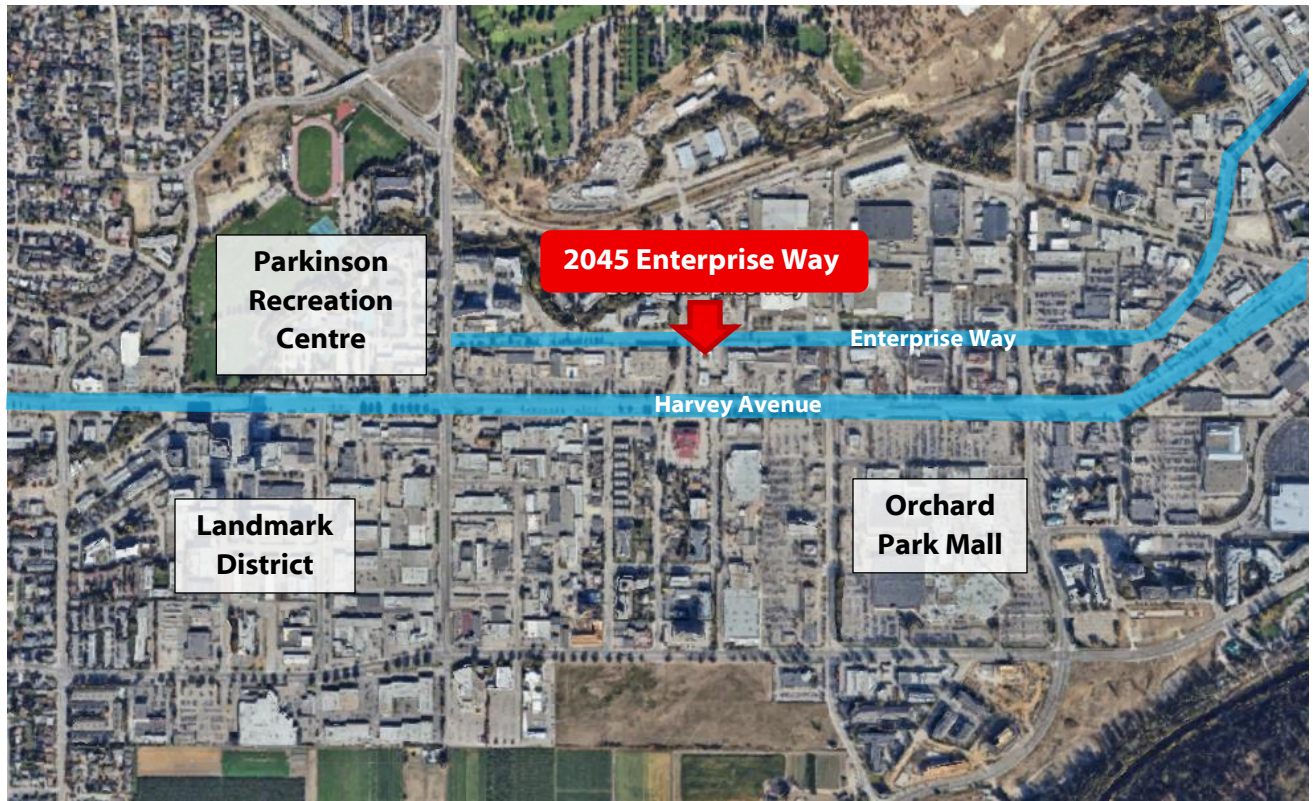
Aerial of Lot



Parking Area



Location



Interior Photos



Interior Photos: Continued



Interior Photos: Continued



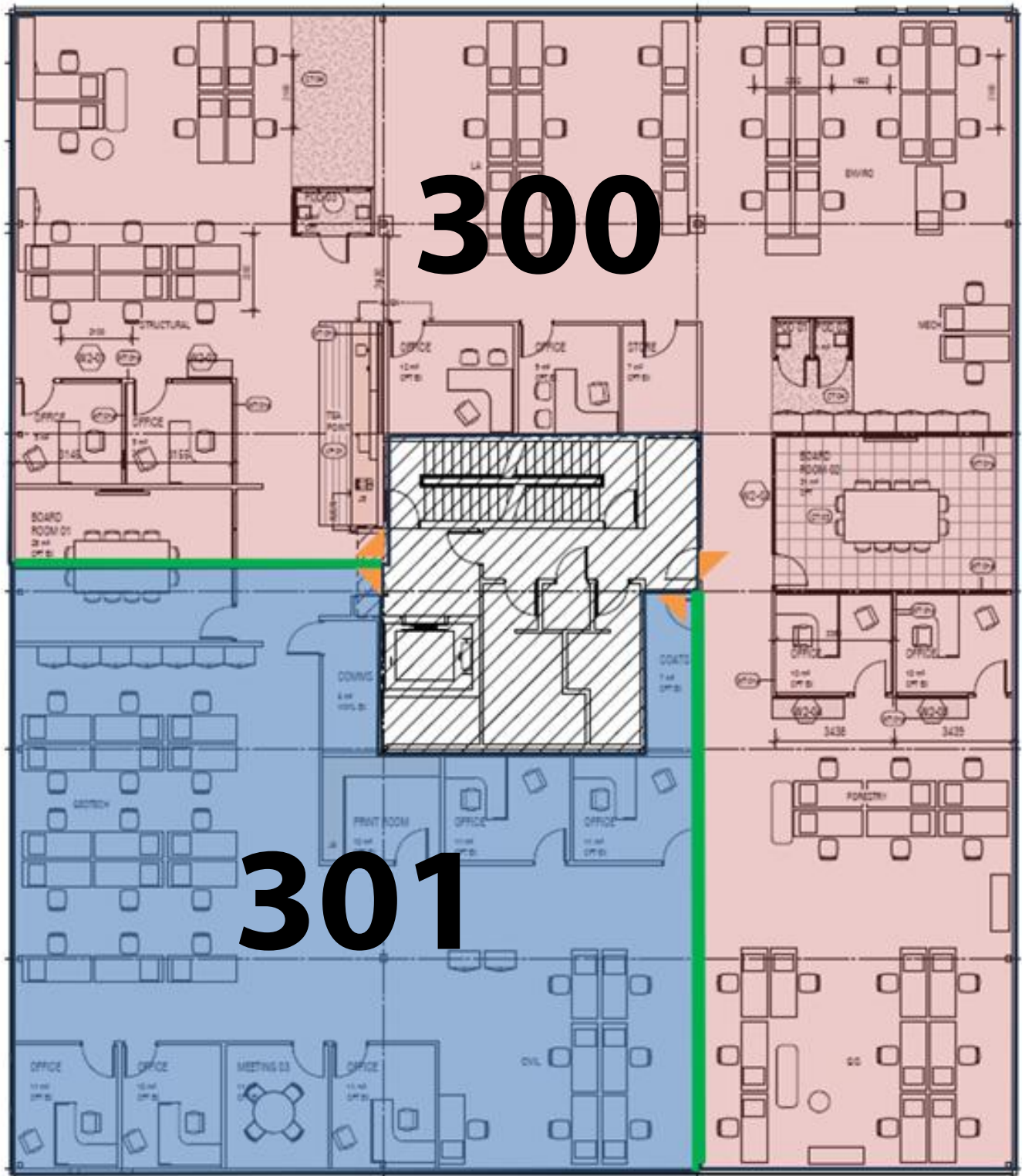
Bike Storage, Lockers & Shower Rooms



Entranceway



Third Floor Plan: 10,656 Rentable (approx.)



Proposed unit split approximately shown above:
Unit 300: 7,010 sf (BOMA) | Unit 301: 3,646 sf (BOMA)

Unit sizes may be adaptable to meet Tenant requirements, walls shown above in green are to be installed/adapted depending on final unit sizes.

CA1 Zoning Uses Per Bylaw 12375 (Subject to Change)

(*P' Principal Use, 'S' Secondary Use, '-' Not Permitted)

Uses		C1	C2	CA1	Uses		C1	C2	CA1	Uses		C1	C2	CA1
1	Accessory Buildings or Structures	S	S	S	23	Education Services	-	P	P	46	Parks	-	-	S
2	Agriculture, Urban	S	S	S	24	Emergency and Protective Services	P	P	P	47	Participant Recreation Services, Indoor	P	P	P
3	Alcohol Production Facility	-	P ^{.1}	P ^{.1}	25	Exhibition and Convention Facilities	-	-	-	48	Participant Recreation Services, Outdoor	-	-	-
4	Animal Clinics, Major	-	P	P	26	Fleet Services	-	P	-	49	Personal Service Establishment	P	P	P
5	Animal Clinics, Minor	P	P	P	27	Food Primary Establishment	P ^{.5}	P	P	50	Professional Services	P	P	P
6	Apartment Housing	P ^{.6}	P ^{.6}	P	28	Gaming Facilities	-	-	-	51	Recreational Water Activities	-	-	-
7	Auctioneering Establishments	-	P	-	29	Gas Bar	P ^{.12}	P ^{.12}	-	52	Recycling Depots	-	-	-
8	Automotive & Equipment	-	P	-	30	General Industrial Use	-	-	-	53	Recycling Drop-Offs	P	P	P
9	Automotive & Equipment, Industrial	-	-	-	31	Greenhouses and Plant Nurseries	P	P	-	54	Recycling Plants	-	-	-
10	Boat Launches	-	-	-	32	Group Home	-	-	-	55	Religious Assemblies	P	P	P
11	Boat Storage	-	-	-	33	Health Services	P	P	P	56	Residential Security / Operator Unit	S	S	-
12	Bulk Fuel Depot	-	-	-	34	Home-Based Business, Major	-	-	S ^{.10}	57	Retail	P	P	P
13	Cannabis Production Facilities	-	-	-	35	Home-Based Business, Minor	-	-	S	58	Retail Cannabis Sales	P ^{.9}	P ^{.9}	P ^{.9}
14	Cemeteries	-	-	-	36	Hospitals	-	-	-	59	Secondary Suite	-	-	-
15	Child Care Centre, Major	P	P	P	37	Hotels / Motels	-	P	P	60	Single Detached Housing	-	-	-
16	Child Care Centre, Minor	S	S	S	38	Liquor Primary Establishment	P ^{.4, .5}	P ^{.4}	P ^{.4}	61	Spectator Sports Establishments	-	-	-
17	Commercial Storage	-	P	-	39	Marinas	-	-	-	62	Stacked Townhouses	-	-	P
18	Concrete and Asphalt Plants	-	-	-	40	Moorage, Permanent	-	-	-	63	Temporary Shelter Services	-	P	P
19	Cultural and Recreation Services	P	P	P	41	Moorage, Temporary	-	-	-	64	Townhouses	-	-	P
20	Detention and Correction Services	-	-	-	42	Natural Resource Extraction	-	-	-	65	Utility Services, Infrastructure	-	-	-
21	Docks	-	-	-	43	Non-Accessory Parking	-	P	P	66	Warehousing	-	P	-
22	Drive Throughs	-	P ^{.14}	P ^{.14}	44	Offices	P ^{.6}	P ^{.6}	P	67	Wrecking Yards	-	-	-
					45	Outdoor Storage	-	-	-					



E&OE: The information contained in this document was obtained from sources assumed to be reliable but is not guaranteed by Corporate Accord Realty Ltd. and is subject to terms/conditions existing at the time of any transaction taking place. Please verify all important information. This communication is not intended to cause or induce breach of an existing agency relationship.