

RETAIL/OFFICE FOR LEASE

101 - 2149 Springfield Road, Kelowna

- 1935 ft.² of bright space with Springfield frontage and abundant windows
- Excellent signage on high traffic Springfield Road near Orchard Park Mall!
- **Former dental office** features significant cabinetry and plumbing in place, but can be made more open depending on Tenant requirements
- Abundant on-site parking with 10 stalls allocated to this area
- Available June 1, 2026 | UC3 zoning allows for most retail/office uses (see attached)

Unit	Main Floor (ft. ²)	Base Rent* (/sf/yr)	Triple Net (/sf/yr)	"All In" Rent Per Month**
101	1935	\$28.00	\$16.35	\$7151

*Base rent increases 3% per year to cover inflation | **Plus GST and utilities

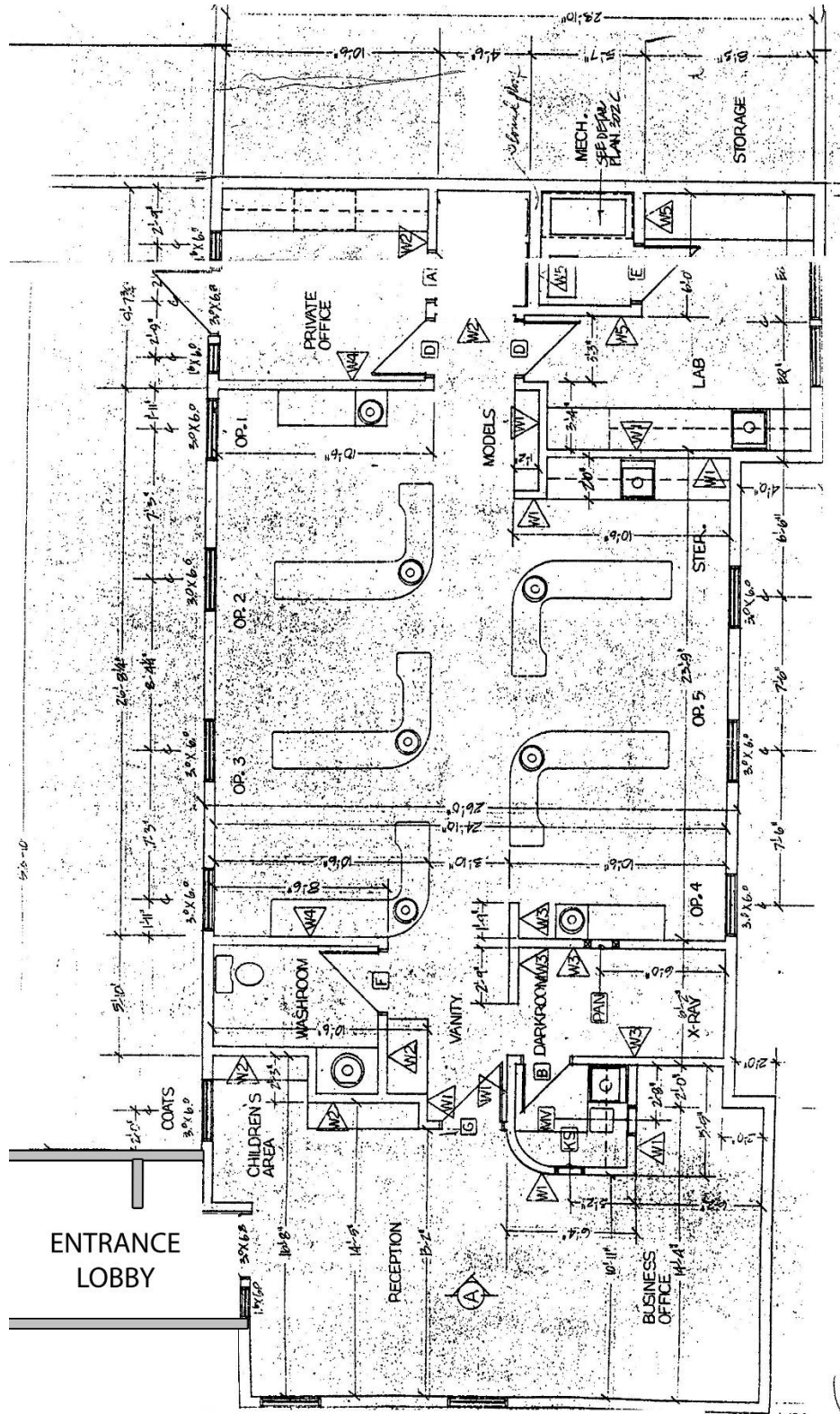


Cameron Bouchard, B.Comm.
Owner | Deal Analyst | Commercial Realtor
250.300.3658 | Cam@CorpAccord.com

Peter Bouchard, B.Comm.
Owner | Managing Broker | Commercial Realtor
250.470.9551 | Peter@CorpAccord.com

www.CorpAccord.com | 500 Sarsons Road, Kelowna, BC V1W 1C2

Approximate Floorplan (Measurements not guaranteed)



SPRINGFIELD RD.

Interior Photos



Interior Photos

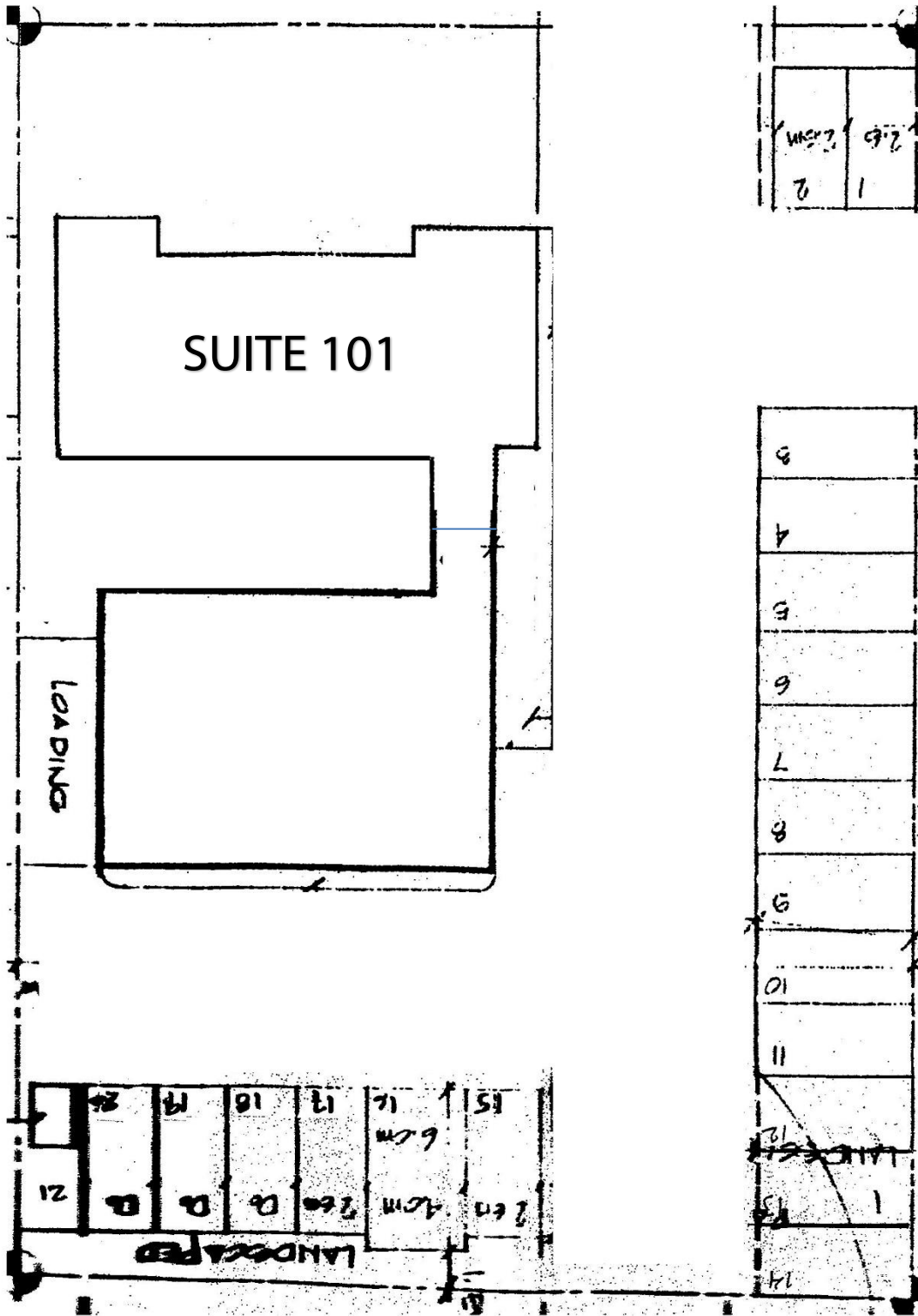


Interior Photos



Approximate Site Plan Showing Abundant Parking

SPRINGFIELD RD.



Entrance Area



Abundant Parking



Continued: UC3 Zoning Uses Per Bylaw 12375 (subject to change):

Section 14.9 – Principal and Secondary Land Uses												
Uses	Zones											
	C1	C2	CA1	VC1	UC1	UC2	UC3	UC4	UC5	I1	I2	
23	Education Services	-	P	P	P	P	P	P	P	P	-	-
24	Emergency and Protective Services	P	P	P	P	P	P	P	P	P	P	P
25	Exhibition and Convention Facilities	-	-	-	-	P	P	P	P	P	-	-
26	Fleet Services	-	P	-	-	-	-	-	-	-	-	P
27	Food Primary Establishment	P ^{.5}	P	P	P	P	P	P	P	P	P ^{.5}	P ^{.5}
28	Gaming Facilities	-	-	-	-	P ^{.8}	P ^{.8}	-	-	-	-	-
29	Gas Bar	P ^{.12}	P ^{.12}	-	P ^{.12}	P ^{.12}	P ^{.12}	P ^{.12}	P ^{.12}	P ^{.12}	-	P ^{.12}
30	General Industrial Use	-	-	-	-	-	-	-	-	-	P	P
31	Greenhouses and Plant Nurseries	P	P	-	-	-	-	-	-	-	-	-
32	Group Home	-	-	-	-	-	-	-	-	-	-	-
33	Health Services	P	P	P	P	P	P	P	P	P	-	-
34	Home-Based Business, Major	-	-	S ^{.10}	S ^{.10}	S ^{.10}	S ^{.10}	S ^{.10}	S ^{.10}	S ^{.10}	-	-
35	Home-Based Business, Minor	-	-	S	S	S	S	S	S	S	-	-
36	Hospitals	-	-	-	-	-	-	-	-	-	-	-
37	Hotels / Motels	-	P	P	P	P	P	P	P	P	-	-
38	Liquor Primary Establishment	P ^{.4, .5}	P ^{.4}	P ^{.4}	P ^{.4}	P ^{.4}	P ^{.4}	P ^{.4}	P ^{.4}	P ^{.4}	P ^{.5}	P ^{.5}
39	Marinas	-	-	-	-	-	-	-	-	-	-	-
40	Moorage, Permanent	-	-	-	-	-	-	-	-	-	-	-
41	Moorage, Temporary	-	-	-	-	-	-	-	-	-	-	-
42	Natural Resource Extraction	-	-	-	-	-	-	-	-	-	-	-
43	Non-Accessory Parking	-	P	P	P	P	P	P	P	P	-	P
44	Offices	P ^{.6}	P ^{.6}	P	S	P	P	P	P	P	-	-
45	Outdoor Storage	-	-	-	-	-	-	-	-	-	-	P
46	Parks	-	-	S	S	S	S	S	S	S	-	-
47	Participant Recreation Services, Indoor	P	P	P	P	P	P	P	P	P	P	P
48	Participant Recreation Services, Outdoor	-	-	-	P	-	-	-	-	-	-	-
49	Personal Service Establishment	P	P	P	P	P	P	P	P	P	-	-
50	Professional Services	P	P	P	P	P	P	P	P	P	-	-
51	Recreational Water Activities	-	-	-	-	-	-	-	-	-	-	-
52	Recycling Depots	-	-	-	-	-	-	-	-	-	-	P
53	Recycling Drop-Offs	P	P	P	P	P	P	P	P	P	P	P
54	Recycling Plants	-	-	-	-	-	-	-	-	-	-	-
55	Religious Assemblies	P	P	P	P	P	P	P	P	P	-	-
56	Residential Security / Operator Unit	S	S	-	-	-	-	-	-	-	S	S
57	Retail	P	P	P	P	P	P	P	P	P	-	-
58	Retail Cannabis Sales	P ^{.9}	P ^{.9}	P ^{.9}	P ^{.9}	P ^{.9}	P ^{.9}	P ^{.9}	P ^{.9}	P ^{.9}	S ^{.9}	S ^{.9}
59	Secondary Suite	-	-	-	-	S ^{.15}	S ^{.15}	S ^{.15}	S ^{.15}	S ^{.15}	-	-
60	Single Detached Housing	-	-	-	-	P	P	P	P	P	-	-
61	Spectator Sports Establishments	-	-	-	-	P	P	P	P	-	-	-
62	Stacked Townhouses	-	-	P	P	P ^{.11}	P ^{.11}	P ^{.11}	P ^{.11}	P ^{.11}	-	-
63	Temporary Shelter Services	-	P	P	P	P	P	P	P	P	-	P
64	Townhouses	-	-	P	P	P ^{.11}	P ^{.11}	P ^{.11}	P ^{.11}	P ^{.11}	-	-
65	Utility Services, Infrastructure	-	-	-	-	-	-	-	-	-	-	-
66	Warehousing	-	P	-	-	-	-	-	-	-	P	P
67	Wrecking Yards	-	-	-	-	-	-	-	-	-	-	-



E&OE: The information contained in this document was obtained from sources assumed to be reliable but is not guaranteed by Corporate Accord Realty Ltd. and is subject to terms/conditions existing at the time of any transaction taking place. Please verify all important information. This communication is not intended to cause or induce breach of an existing agency relationship.